

## CHARACTERISTICS

- Versatility of metrics and components
- Hanging plate with double hole for easier installation.
- Connecting Sleeves of rods for large applications (malls, shops, etc.).
- Different ceiling fixing solutions: brackets, brass studs, tilting heads.
- Finished in galvanized or stainless (according to each element).

## BASE MATERIAL



## EXAMPLES



1.RANGE

| ITEM | DENOMINATION | PHOTO | MATERIAL                       | COATING   |
|------|--------------|-------|--------------------------------|---|
| 1    | CA-BA        |       | Steel EN10130-DC01+A-m         | Zinc plated $\geq 5\mu\text{m}$ ISO 4042 A2J        |
| 2    | CA-PA        |       | Steel SAE 1010                 | Zinc plated $\geq 5\mu\text{m}$ ISO 4042 A2J        |
| 3    | TALA         |       | Brass T-0T58 Pb UNI 5705       | Brass   |
| 4    | VR-SE        |       | Steel class 4.8 ISO 898-1      | Zinc plated $\geq 5\mu\text{m}$ ISO 4042 A2J        |
| 5    | MAHE         |       | Steel SAE J403 1008            | Zinc plated $\geq 5\mu\text{m}$ ISO 4042 A2J        |
| 6    | MARE         |       | Steel SAE J403 1008            | Zinc plated $\geq 5\mu\text{m}$ ISO 4042 A2J        |
| 7    | MARI         |       | Steel A2-70 UNE-EN ISO 3506-1  | Steel A2-70   |
| 8    | PCU          |       | Steel EN10142-DX51D+Z140-M-B-O | Zinc plated $\geq 5\mu\text{m}$ ISO 4042 A2J        |
| 9    | ES-DR        |       | Steel SAE J403 1008            | Zinc plated $\geq 5\mu\text{m}$ ISO 4042 A2J        |
| 10   | ES-DA2       |       | Steel A2-70 UNE-EN ISO 3506-1  | Steel A2-70   |
| 11   | AB-TA        |       | Steel class 5.6 ISO 898-1      | Zinc plated $\geq 5\mu\text{m}$ ISO 4042 A2J        |
| 12   | AB-TA B      |       | Steel class 5.6 ISO 898-1      | Yellow zinc plated $\geq 5\mu\text{m}$ ISO 4042 A2J |
| 13   | AB-TA A2     |       | Steel A2-70 UNE-EN ISO 3506-1  | Steel A2-70   |

| ITEM | DENOMINATION | PHOTO | MATERIAL                      | COATING  |
|------|--------------|-------|-------------------------------|--|
| 14   | AB-TG        |       | Stel SAE J403 1023            | <br>Zinc plated $\geq 5\mu\text{m}$ ISO 4042 A2J |
| 15   | PF-ZN        |       | Steel S235R                   | <br>Zinc plated $\geq 5\mu\text{m}$ ISO 4042 A2J |
| 16   | PF-A4        |       | Steel A4-70 UNE-EN ISO 3506-1 | <br>Steel A4-70                                  |
| 17   | AB-TR        |       | Steel C1008                   | <br>Zinc-plated $\geq 5\mu\text{m}$ ISO 4042 A2J |
| 18   | AB-FP        |       | Steel C1008                   | <br>Zinc-plated $\geq 5\mu\text{m}$ ISO 4042 A2J |
| 19   | AB-FC        |       | Steel C1008                   | <br>Zinc-plated $\geq 5\mu\text{m}$ ISO 4042 A2J |
| 20   | AB-PM7       |       | Steel Q195                    | <br>Zinc-plated $\geq 5\mu\text{m}$ ISO 4042 A2J |
| 21   | TM-VR        |       | Acero C1008                   | <br>Zinc-plated $\geq 5\mu\text{m}$ ISO 4042 A2J |
| 22   | MAMH         |       | Steel Q195                    | <br>Zinc-plated $\geq 5\mu\text{m}$ ISO 4042 A2J |
| 23   | UN-CO        |       | Steel S235R                   | <br>Zingué $\geq 5\mu\text{m}$ ISO 4042 A2J      |
| 24   | CO-AR        |       | Steel Q195                    | <br>Zinc-plated $\geq 5\mu\text{m}$ ISO 4042 A2J |

## 2. INSTALLATION DATA

### 2.1 CA-BA

### Toggle head



#### Properties



Steel

Zinc Plated Coating

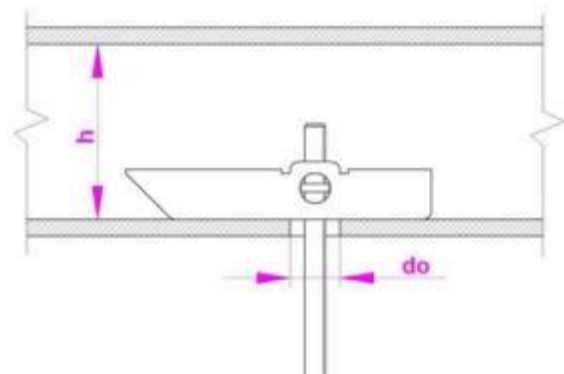
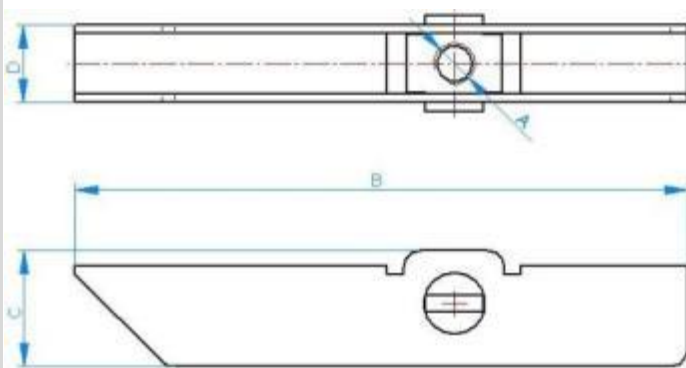
Patent

#### Sizes

#### Installation Data

| CODE                    |      | CABA004 | CABA005 | CABA006 | CABA008 | CODE                                     |      | CABA004 | CABA005 | CABA006 | CABA008 |
|-------------------------|------|---------|---------|---------|---------|--|------|---------|---------|---------|---------|
| A: $\varnothing$ thread | [mm] | M4      | M5      | M6      | M8      | d0: drill diameter                       | [mm] | 14      | 14      | 16      | 20      |
| B: total length         | [mm] | 65      | 65      | 70      | 80      | h: hole depth $\geq$                     | [mm] | 70      | 70      | 75      | 85      |
| C: High                 | [mm] | 10.7    | 10.7    | 12.0    | 16.8    | Recommended tension load ( $N_{recom}$ ) | [N]  | 250     | 300     | 350     | 450     |
| D: Width                | [mm] | 7.7     | 7.7     | 9.0     | 12.2    |  |      |         |         |         |         |
| Threaded rod            |      | 975ZM04 | 975ZM05 | 975ZM06 | 975ZM08 |  |      |         |         |         |         |

#### DRAWING



**2.2 CA-PA**

**Spring toggle**



**Properties**



Steel

Zin Plated coating

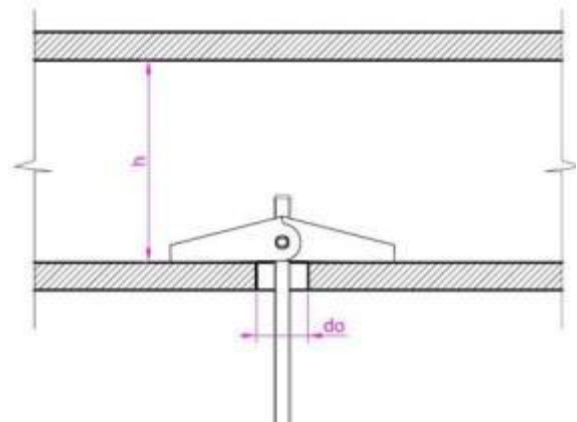
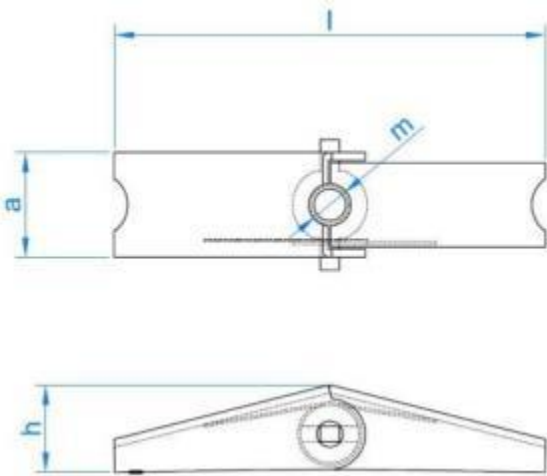
Patent

**Sizes**

**Installation Data**

| CODE            |      | CAPA004 | CAPA005 | CAPA006 | CAPA008 | CODE   |      | CAPA004 | CAPA005 | CAPA006 | CAPA008 |
|-----------------|------|---------|---------|---------|---------|--|------|---------|---------|---------|---------|
| A: Ø thread     | [mm] | M4      | M5      | M6      | M8      | d0: drill diameter                             | [mm] | 12      | 15      | 18      | 22      |
| B: Total length | [mm] | 39      | 50      | 55      | 76      | h: hole depth ≥                                | [mm] | 26      | 33      | 37      | 54      |
| C: High         | [mm] | 10      | 12      | 14      | 16      |  |      |         |         |         |         |
| D: Width        | [mm] | 9       | 12      | 15      | 17      | Recommended tension load (N <sub>recom</sub> ) | [N]  | 95      | 115     | 130     | 140     |
| Threaded rod    |      | 975ZM04 | 975ZM05 | 975ZM06 | 975ZM08 |  |      |         |         |         |         |

**DRAWING**



## 2.3 TALA

### Brass expansion anchor



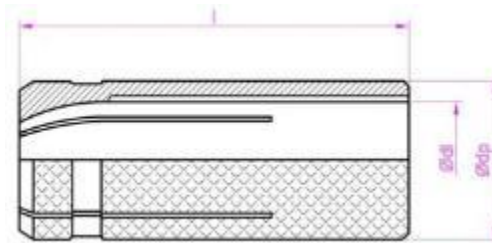
#### Properties



Brass

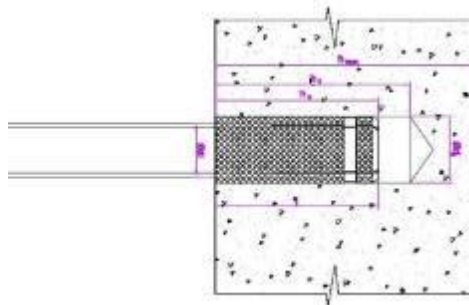
#### Sizes

| CODE                       |      | TALAS32 | TALAM04 | TALAM05 | TALAM06 | TALAM08 | TALAM10 | TALAM12 |
|----------------------------|------|---------|---------|---------|---------|---------|---------|---------|
| di: Inside thread diameter | [mm] | W5/32   | M4      | M5      | M6      | M8      | M10     | M12     |
| dp: Outside diameter       | [mm] | 5       | 5       | 6       | 8       | 10      | 12      | 15      |
| l: anchor length           | [mm] | 16      | 16      | 18      | 23      | 28      | 34      | 38      |

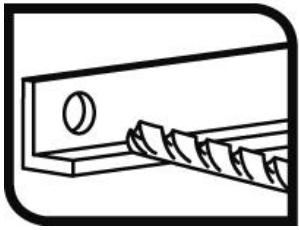


#### Installation Data

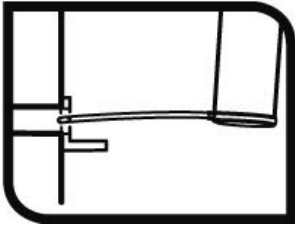
| CODE                      |      | TALAS32 | TALAM04 | TALAM05 | TALAM06 | TALAM08 | TALAM10 | TALAM12 |
|---------------------------|------|---------|---------|---------|---------|---------|---------|---------|
| Ø Threaded rod            | [mm] | W5/32   | M4      | M5      | M6      | M8      | M10     | M12     |
| Ø Drill diameter          | [mm] | 5       | 5       | 6       | 8       | 10      | 12      | 15      |
| Drill depth ≥             | [mm] | 20      | 20      | 22      | 28      | 33      | 40      | 45      |
| Anchor depth ≥            | [mm] | 16      | 16      | 18      | 23      | 28      | 34      | 38      |
| Thread depth              | [mm] | 14      | 14      | 16      | 21      | 26      | 32      | 36      |
| Base material Thickness ≥ | [mm] | 25      | 25      | 30      | 35      | 40      | 45      | 50      |
| Recommended tension load  | [N]  | 600     | 600     | 700     | 1000    | 1500    | 2100    | 3200    |



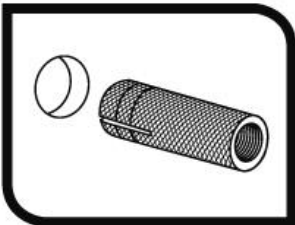
Installation procedure



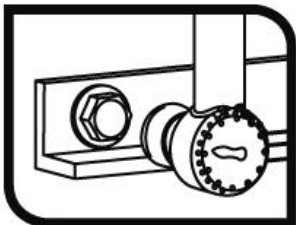
Drill to the minimum depth and diameter specified, maintaining perpendicular to the surface of the base material.



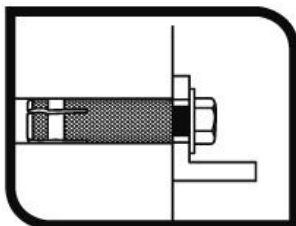
Thoroughly clean hole from dust and drilling fragments.



To introduce completely the capsule in the base material. Use a hammer if necessary.



Thread the rod in the anchor to the depth shown in the table. A shall depth could cause a lower resistance of the brass anchor; an excessive depth can break the anchor, even without any load applied to it.



## 2.4 VR-SE

### Small threaded bolt



#### Properties



Steel

Zin Plated coating

#### Sizes

#### DRAWING

| CODE                    |      | VRSE06020 | VRSE06030 | VRSE08020 | VRSE08030 | VRSE10030 | VRSE12030 |
|-------------------------|------|-----------|-----------|-----------|-----------|-----------|-----------|
| M: $\varnothing$ thread | [mm] | M6        | M6        | M8        | M8        | M10       | M12       |
| L: Total length         | [mm] | 20        | 30        | 20        | 30        | 30        | 30        |



## 2.5 MAHE

### Coupling nut hexagonal\*



#### Properties



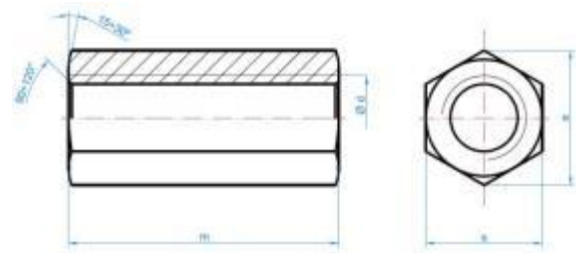
Steel

Zin Plated coating

#### Sizes

#### DRAWING

| CODE                     | MAE0620 | MAE0630 | MAE0830 | MAE1030 | MAE1235 | MAE1650 | MAE2060 |
|--------------------------|---------|---------|---------|---------|---------|---------|---------|
| $\varnothing d$ : thread | M6      | M6      | M8      | M10     | M12     | M16     | M20     |
| m: total length          | 20      | 30      | 25      | 30      | 35      | 50      | 60      |
| s: installation key      | 10      | 10      | 11      | 13      | 17      | 24      | 30      |
| Threaded rod             | 975ZM06 | 975ZM06 | 975ZM08 | 975ZM10 | 975ZM12 | 975ZM16 | 975ZM20 |



\*resistencia equivalente a un tornillo 6.8



**2.6 MARE**

**Cylindrical coupling nut\***



**Properties**



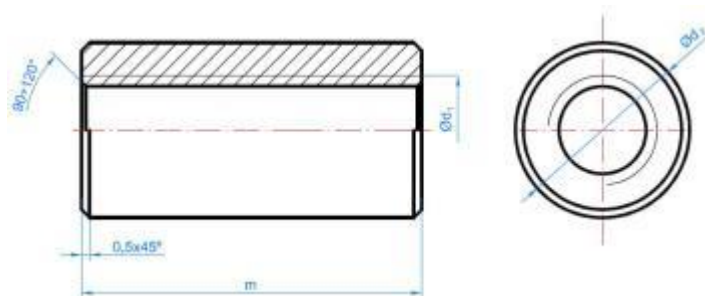
Steel

Zin Plated coating

**Sizes**

| CODE                  |      | MAR5322 | MAR0420 | MAR0620 | MAR0630 | MAR0825 | MAR0830 | MAR1030 | MAR1235 | MAR1650 |
|-----------------------|------|---------|---------|---------|---------|---------|---------|---------|---------|---------|
| Ød1: thread           | [mm] | M4      | M6      | M6      | M6      | M8      | M8      | M10     | M12     | M16     |
| m: total length       | [mm] | 20      | 20      | 20      | 30      | 25      | 30      | 30      | 35      | 50      |
| Ød2: outside diameter | [mm] | 7       | 7       | 10      | 10      | 11      | 11      | 13      | 15      | 22      |
| Threaded rod          |      | -       | 975ZM04 | 975ZM06 | 975ZM06 | 975ZM08 | 975ZM08 | 975ZM10 | 975ZM12 | 975ZM16 |

**DRAWING**



\*resistencia equivalente a un tornillo 6.8

**2.7 MARI**

**Stainless cylindrical coupling nut\***



**Properties**

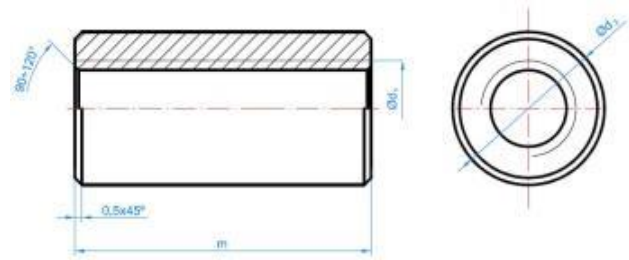


Stainless steel A2

**Sizes**

**DRAWING**

| CODE                        |      | MARI0830 | MARI1030 |
|-----------------------------|------|----------|----------|
| d $\phi$ : thread           | [mm] | M8       | M10      |
| m: total length             | [mm] | 30       | 30       |
| $\phi$ d2: outside diameter | [mm] | 11       | 13       |
| Threaded rod                |      | 975A2M10 | 975A2M10 |



**2.8 PCU**

**Angular iron strap**



**Properties**



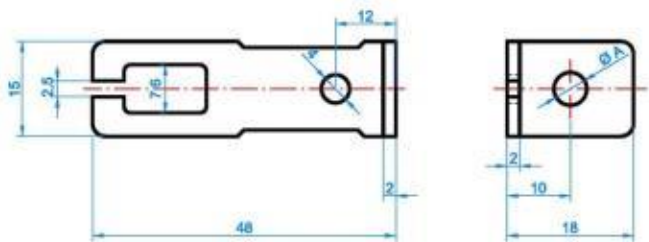
Steel

Zin Plated coating

**Sizes**

**DRAWING**

| CODE              |      | PCU0005 | PCU0006 |
|-------------------|------|---------|---------|
| d $\phi$ : thread | [mm] | M8      | M10     |
| Threaded rod      |      | 975ZM06 | 975ZM10 |



**2.9 ES-DR**

**Zinc plated Double threaded screw**



**Properties**



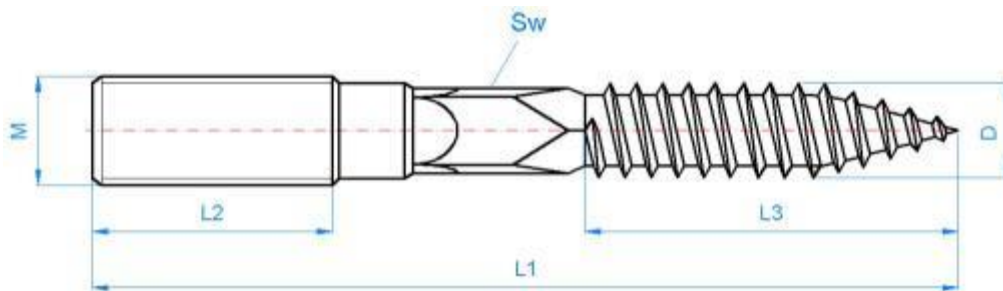
Steel

Zin Plated coating

**Sizes**

| CODE      | ØM        | L1          | ØD          | L2      | L3          | SW          | Recess           |
|-----------|-----------|-------------|-------------|---------|-------------|-------------|------------------|
| ESDR06040 | M6        | 38,5 ÷ 40,5 | 5,75 ÷ 6,05 | 11 ÷ 13 | 23 ÷ 25     | --          | Hexalobular Tx15 |
| ESDR06050 |           | 48,5 ÷ 50,5 |             | 15 ÷ 17 | 27 ÷ 30     |             |                  |
| ESDR06060 |           | 58 ÷ 61     |             | 17 ÷ 19 | 33 ÷ 36     |             |                  |
| ESDR06070 |           | 68 ÷ 71     |             | 25 ÷ 27 |             |             |                  |
| ESDR06080 |           | 78 ÷ 81     |             | 33 ÷ 35 |             |             |                  |
| ESDR08050 | M8        | 48,5 ÷ 51   | 6,85 ÷ 7,15 | 12 ÷ 14 | 28 ÷ 31     | --          | Hexalobular Tx25 |
| ESDR08060 |           | 58,5 ÷ 61   |             | 14 ÷ 16 | 36 ÷ 39     |             |                  |
| ESDR08070 |           | 68,5 ÷ 71   |             | 24 ÷ 26 |             |             |                  |
| ESDR08080 |           | 78 ÷ 81     |             | 27 ÷ 30 |             |             |                  |
| ESDR08090 |           | 88 ÷ 91     |             | 46 ÷ 49 | 5,85 ÷ 6,00 |             |                  |
| ESDR08100 |           | 98 ÷ 101    |             |         |             |             |                  |
| ESDR08110 |           | 108 ÷ 111   |             |         |             |             |                  |
| ESDR08120 |           | 118 ÷ 121   |             |         |             |             |                  |
| ESDR08130 | 128 ÷ 131 | 48 ÷ 52     |             |         |             |             |                  |
| ESDR10080 | M10       | 78 ÷ 81     | 8,75 ÷ 9,15 | 16 ÷ 20 | 45 ÷ 48     | 7,85 ÷ 8,00 |                  |
| ESDR10100 |           | 98 ÷ 101    |             | 22 ÷ 26 | 55 ÷ 59     |             |                  |
| ESDR10110 |           | 108 ÷ 111   |             | 36 ÷ 40 |             |             |                  |
| ESDR10120 |           | 118 ÷ 121   |             | 43 ÷ 47 |             |             |                  |
| ESDR10130 |           | 128 ÷ 131   |             | 48 ÷ 52 |             |             |                  |
| ESDR10140 |           | 138 ÷ 141   |             |         |             |             |                  |
| ESDR10150 |           | 148 ÷ 151   |             |         |             |             |                  |
| ESDR10180 |           | 178 ÷ 181   |             |         |             |             |                  |
| ESDR10200 |           | 198 ÷ 201   |             |         |             |             |                  |

**DRAWING**



**2.10 ES-DA2**

**Stainless double threaded screw**

**Properties**



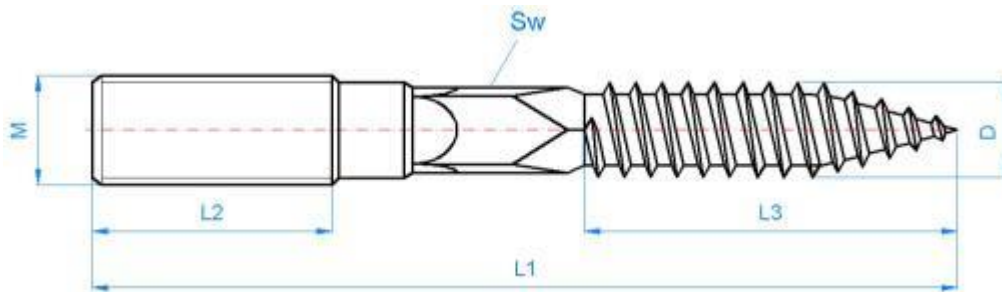
Stainless Steel A2



**Sizes**

| CODE       | ØM  | L1          | ØD          | L2          | L3            | SW          | Recess |
|------------|-----|-------------|-------------|-------------|---------------|-------------|--------|
| ESDA208060 | M8  | 58,5 ÷ 61,5 | 6,85 ÷ 7,30 | 17,5 ÷ 22,5 | 28,95 ÷ 31,05 | 5,85 ÷ 6,00 | --     |
| ESDA210060 | M10 |             | 8,75 ÷ 9,15 |             |               | 7,85 ÷ 8,00 |        |

**DRAWING**



**2.11 AB-TA**

**Threaded screws for clamps**



**Properties**



Steel

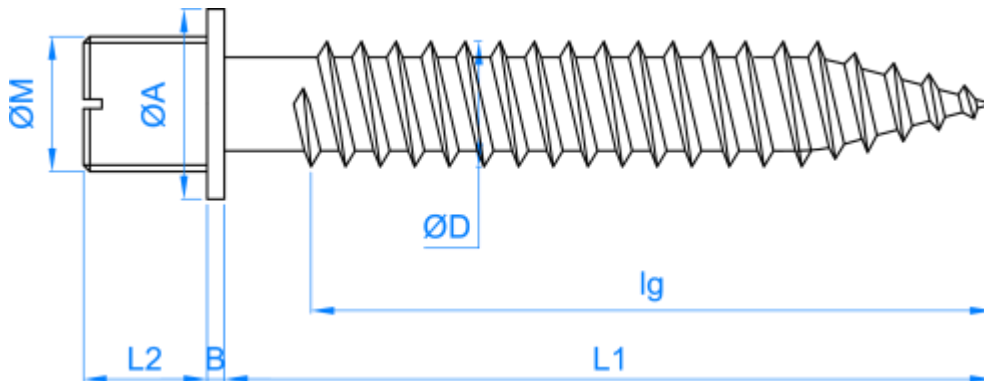
Zin Plated coating

Flat recess

**Sizes**

| CODE     | ØM    | L1            | ØD          | L2        | B         | ØA          | lg            |
|----------|-------|---------------|-------------|-----------|-----------|-------------|---------------|
| ABTA0630 | M6    | 28,95 ÷ 31,05 | 4,85 ÷ 5,15 | 5,8 ÷ 6,2 | 0,9 ÷ 1,1 | 8,0 ÷ 8,2   | Full threaded |
| ABTA0640 |       | 38,75 ÷ 41,25 |             |           |           |             |               |
| ABTA0650 |       | 48,75 ÷ 51,25 |             |           |           |             |               |
| ABTA0730 | M7    | 21÷23         | 5,5÷6,1     | 5,8 ÷ 6,2 | 0,8÷1,2   | 9,0÷10,0    | Full threaded |
| ABTA0740 |       | 31÷33         |             |           |           |             |               |
| ABTA0750 |       | 41÷43         |             |           |           |             |               |
| ABTA0760 |       | 51÷53         |             |           |           |             |               |
| ABTA0770 |       | 61÷63         |             |           |           |             |               |
| ABTA0780 | 71÷73 | 45            |             |           |           |             |               |
| ABTA0840 | M8    | 38,75 ÷ 41,25 | 5,85 ÷ 6,15 | 7,3 ÷ 7,7 | 1,3 ÷ 1,5 | 8,0 ÷ 8,3   | Full threaded |
| ABTA0860 |       | 58,50 ÷ 61,50 |             |           |           |             | 45            |
| ABTA0880 |       | 78,50 ÷ 81,50 |             |           |           |             | 45            |
| ABTA1050 | M10   | 48,50 ÷ 51,50 | 6,85 ÷ 7,15 | 8,8 ÷ 9,2 | 1,6 ÷ 1,8 | 12,0 ÷ 12,2 | Full threaded |
| ABTA1070 |       | 68,50 ÷ 71,50 |             |           |           |             | 45            |
| ABTA1090 |       | 88,25 ÷ 91,75 |             |           |           |             | 45            |

**DRAWING**



**2.12 AB-TA B**

**Yellow zinc-plated threaded screws for clamps**



**Properties**



Steel

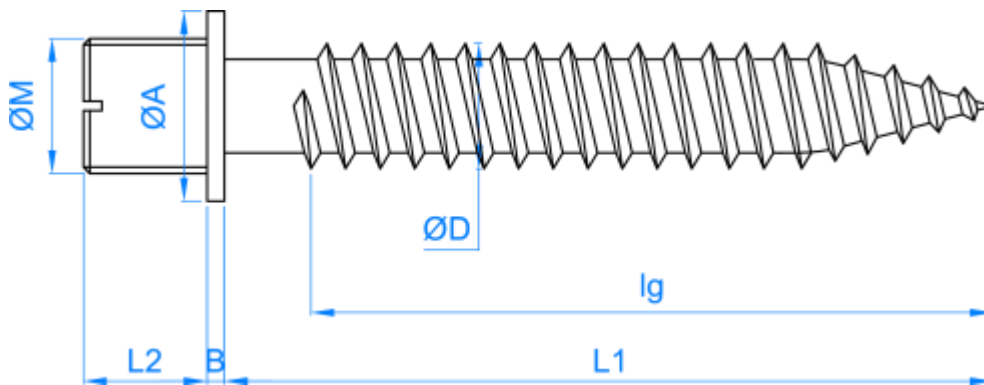
Yellow zinc plated coating

Flat recess

**Sizes**

| CODE     | ØM | L1            | ØD          | L2        | B         | ØA        | lg            |
|----------|----|---------------|-------------|-----------|-----------|-----------|---------------|
| ABTA0630 | M6 | 28,95 ÷ 31,05 | 4,85 ÷ 5,15 | 5,8 ÷ 6,2 | 0,9 ÷ 1,1 | 8,0 ÷ 8,2 | Full threaded |
| ABTA0640 |    | 38,75 ÷ 41,25 |             |           |           |           |               |
| ABTA0650 |    | 48,75 ÷ 51,25 |             |           |           |           |               |

**DRAWING**



**2.13 AB-TA A2**

**Stainless threaded screw for clamps**



**Properties**



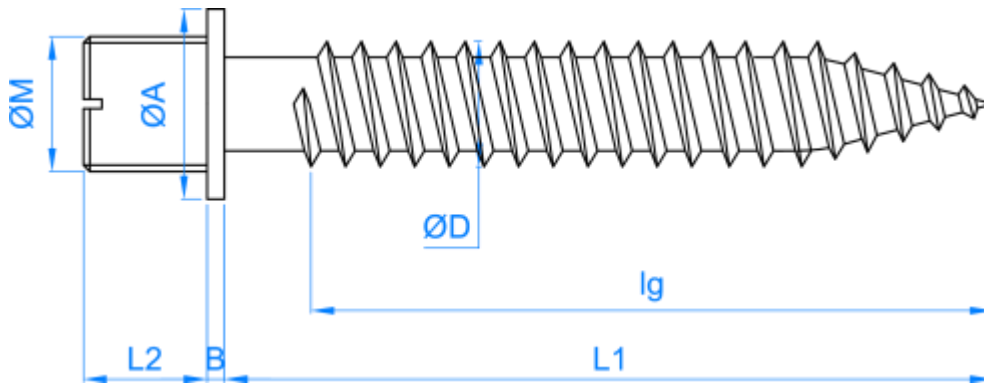
Stainless Steel A2

Flat recess

**Sizes**

| CODE      | ØM | L1            | ØD          | L2        | B   | ØA  | lg            |
|-----------|----|---------------|-------------|-----------|-----|-----|---------------|
| ABTA20630 | M6 | 28,95 ÷ 31,05 | 4,70 ÷ 5,20 | 6,8 ÷ 7,2 | 1,2 | 7,8 | Full threaded |

**DRAWING**



**2.14 AB-TG**

**Threaded screws for clips**



**Properties**



Steel

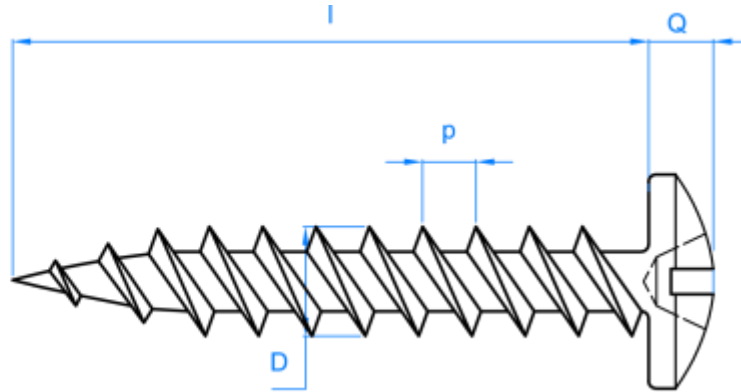
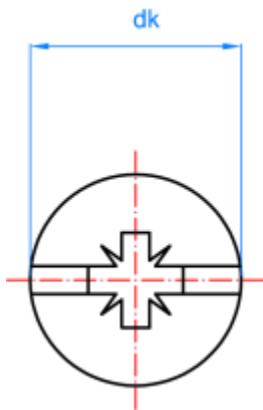
Zinc plated coating

Pz + Flat recess

**Sizes**

| CODE     | $\varnothing dk$ | L  | $\varnothing D$ | p   | Q   | SW |
|----------|------------------|----|-----------------|-----|-----|----|
| ABTG4530 | 9,8              | 30 | 4,3             | 2,0 | 2,5 | 2  |
| ABTG4535 | 9,8              | 35 | 4,3             | 2,0 | 2,5 | 2  |
| ABTG4540 | 9,8              | 40 | 4,3             | 2,0 | 2,5 | 2  |
| ABTG5030 | 11,8             | 30 | 4,8             | 2,2 | 2,7 | 3  |
| ABTG5040 | 11,8             | 40 | 4,8             | 2,2 | 2,7 | 3  |

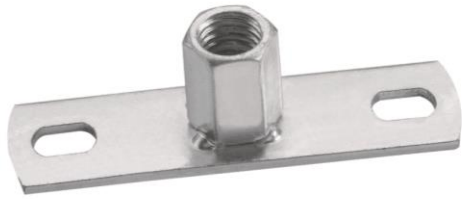
**DRAWING**





**2.15 PF-ZN**

**Zinc plated flat bar for fixation**



**Properties**



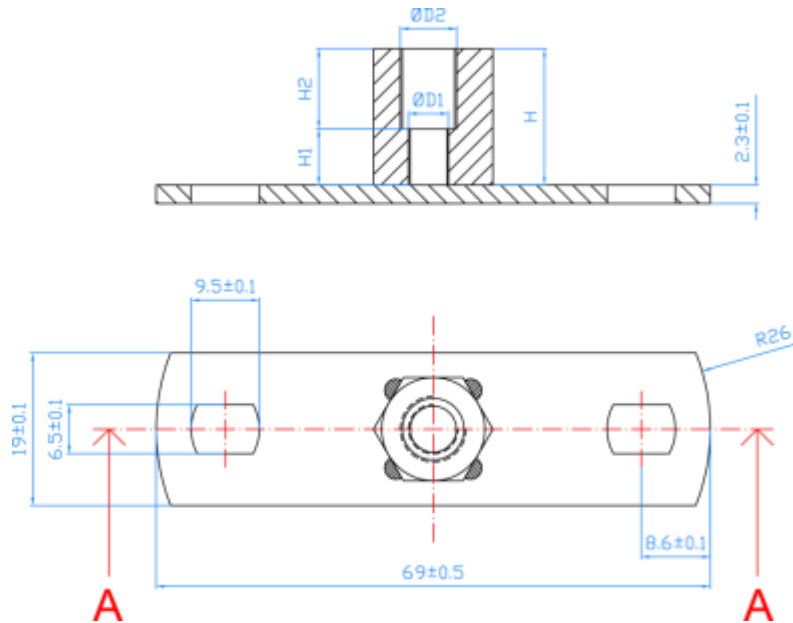
Steel

Zin Plated coating

**Sizes**

| CODE      | D1 | D2  | H   | H1  | H2 |
|-----------|----|-----|-----|-----|----|
| PFZNM0800 | M8 | --  | 7,5 | 7,5 | -- |
| PFZNM0810 | M8 | M10 | 17  | 7   | 10 |
| PFZNM1000 | -- | M10 | 9   | --  | 9  |

**DRAWING**



2.16

PF-A4

Stainless flat bar for fixation



Properties

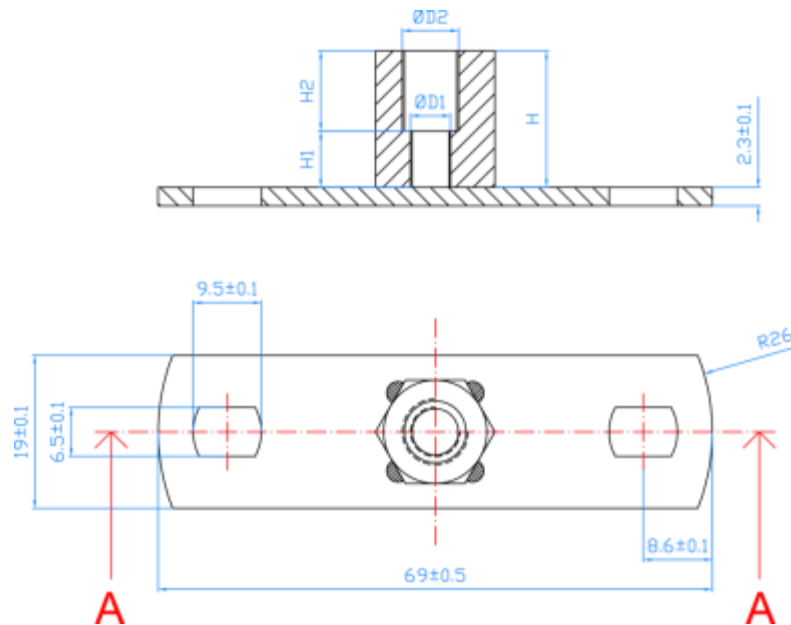


Stainless steel A2

Sizes

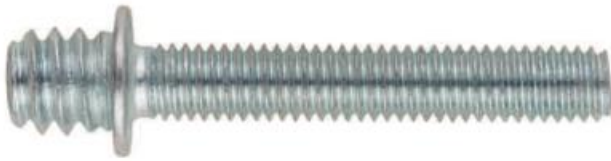
| CODE      | D1 | D2  | H   | H1  | H2 |
|-----------|----|-----|-----|-----|----|
| PFA4M0800 | M8 | --  | 7,5 | 7,5 | -- |
| PFA4M0810 | M8 | M10 | 17  | 7   | 10 |
| PFA4M1000 | -- | M10 | 9   | --  | 9  |

DRAWING



**2.17 AB-TR**

**Threaded screw for clamps**



**Properties**



Steel

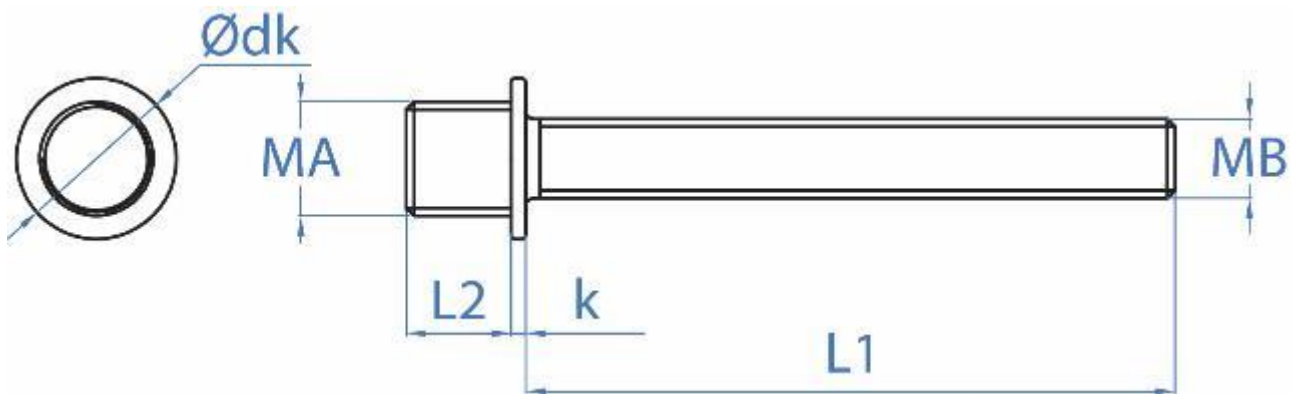


Zin Plated coating

**Sizes**

| CODE      | MA | MB | L1 | L2 | k | Ødk |
|-----------|----|----|----|----|---|-----|
| ABTR05030 | M7 | M5 | 30 | 6  | 1 | 9   |
| ABTR05040 | M7 | M5 | 40 | 6  | 1 | 9   |
| ABTR05050 | M7 | M5 | 50 | 6  | 1 | 9   |
| ABTR05060 | M7 | M5 | 60 | 6  | 1 | 9   |
| ABTR06040 | M7 | M6 | 40 | 6  | 1 | 9   |
| ABTR06050 | M7 | M6 | 50 | 6  | 1 | 9   |
| ABTR06060 | M7 | M6 | 60 | 6  | 1 | 9   |

**DRAWING**



**2.18 AB-FP**

**Flat washer for clamps**



**Properties**



Steel

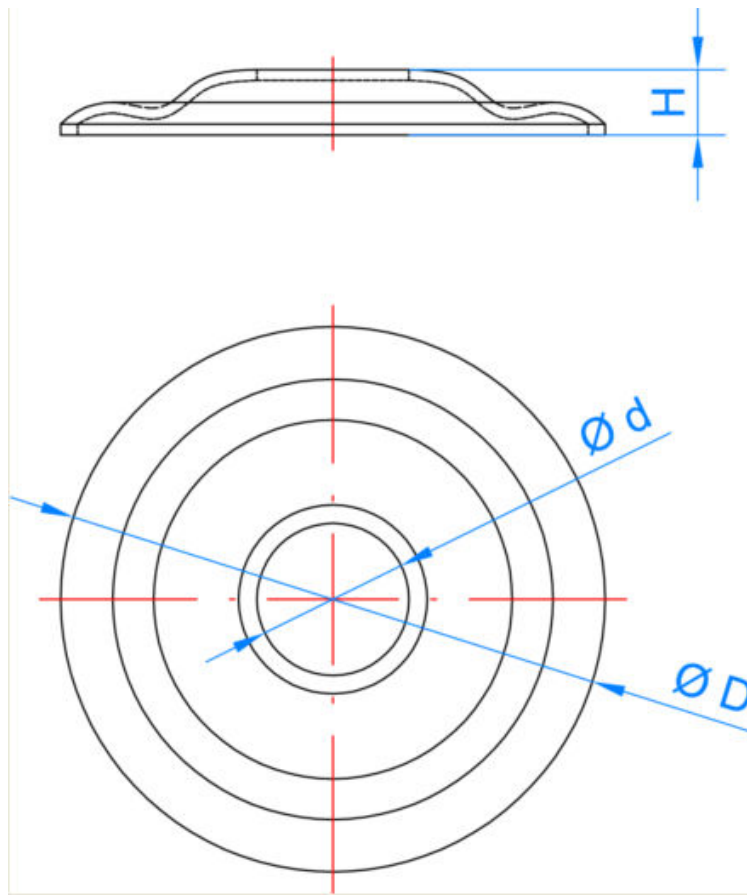


Zin Plated coating

**Sizes**

| CODE   | $\varnothing D$ | $\varnothing d$ | H |
|--------|-----------------|-----------------|---|
| ABFP25 | 25              | 7               | 3 |
| ABFP32 | 32              | 7               | 4 |

**DRAWING**



**2.19 AB-FC**

**Conical washer for clamps**



**Properties**



Steel

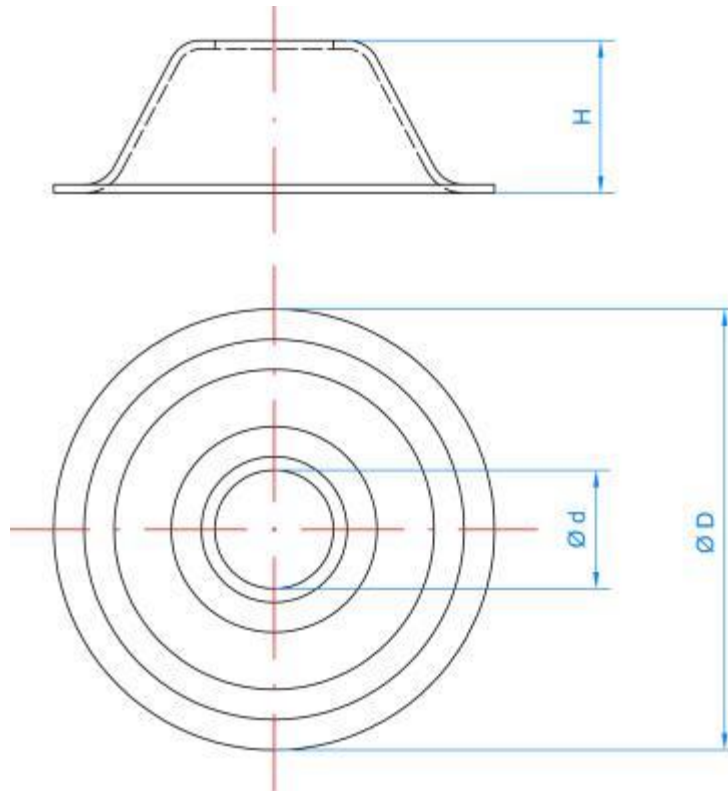


Zin Plated coating

**Sizes**

| CODE   | $\varnothing d$ | $\varnothing D$ | H  |
|--------|-----------------|-----------------|----|
| ABFC09 | 7               | 26              | 9  |
| ABFC14 | 7               | 30              | 14 |
| ABFC19 | 7               | 34              | 19 |

**DRAWING**



**2.20 AB-PM7**

**Cylindrical spacer for clamps M7**



**Properties**



Steel

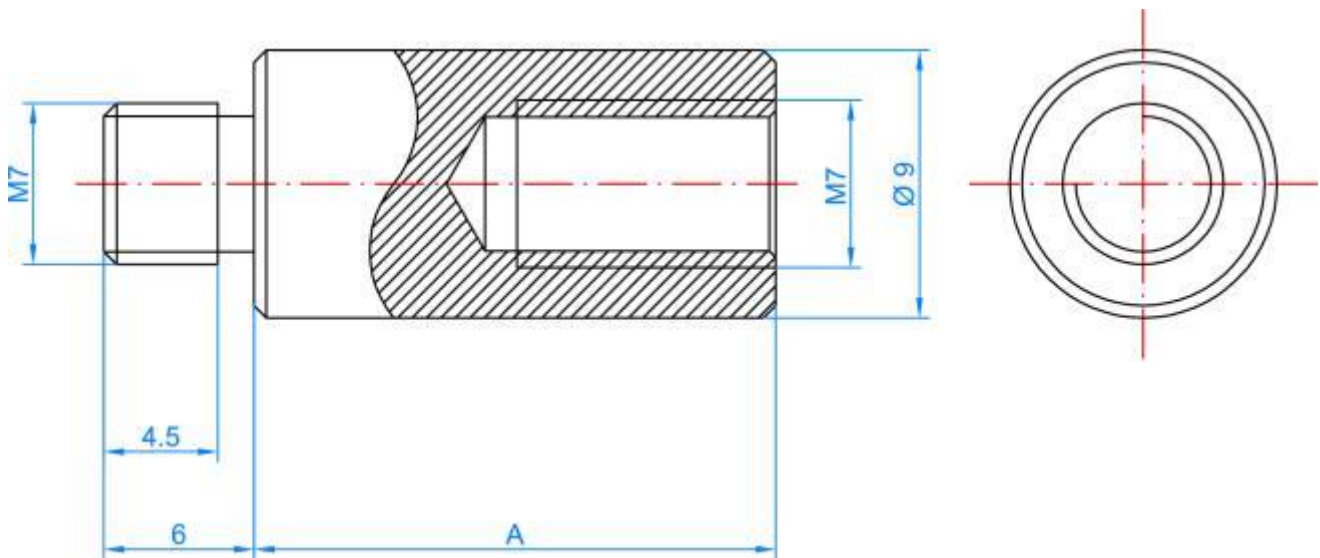


Zin Plated coating

**Sizes**

| CODE    | A  | B | C  |
|---------|----|---|----|
| ABPM720 | 20 | 8 | 11 |
| ABPM730 | 30 | 8 | 12 |
| ABPM740 | 40 | 8 | 13 |

**DRAWING**



2.21

TM-VR

Screw coupling nut for threaded rod



Properties



Steel

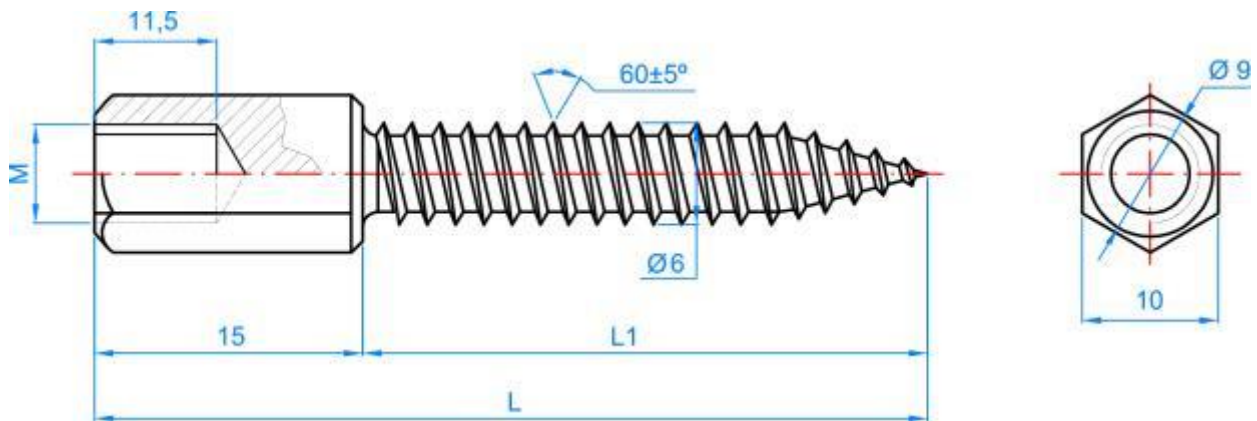


Zin Plated coating

Sizes

| CODE      | M  | L  | L1 |
|-----------|----|----|----|
| TMVR06065 | M6 | 65 | 50 |
| TMVR07065 | M7 | 65 | 50 |
| TMVR08065 | M8 | 65 | 50 |

DRAWING



**2.22 MAMH**

**Spacer nut M/F**



**Properties**



Steel

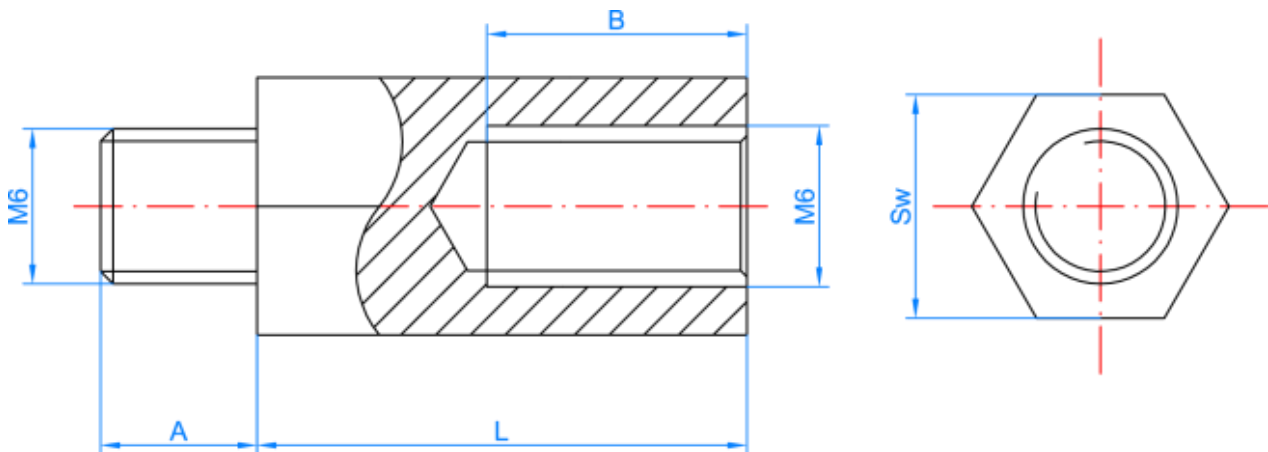


Zin Plated coating

**Sizes**

| CODE     | A  | B  | L  | SW |
|----------|----|----|----|----|
| MAMH0610 | 8  | 8  | 10 | 10 |
| MAMH0620 | 10 | 12 | 20 | 10 |
| MAMH0630 | 10 | 18 | 30 | 10 |
| MAMH0640 | 10 | 18 | 40 | 10 |
| MAMH0650 | 10 | 18 | 50 | 10 |

**DRAWING**





**2.23 UN-CO**

**C clamp for duct**



**Properties**



Steel

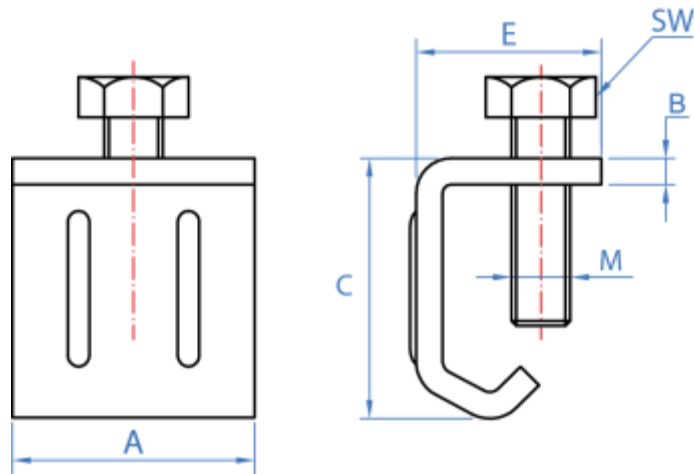


Zin Plated coating

**Sizes**

| CODE     | A    | B    | C  | E  | M  | SW |
|----------|------|------|----|----|----|----|
| UNCO3220 | 27,5 | 2,75 | 30 | 22 | M8 | 10 |

**DRAWING**



**2.24 CO-AR**

**Articulated Hanger**

**Properties**



Steel



Zin Plated coating

**Sizes**

| CODE      | ØM (mm) | ØM1 (mm) | L1 | Sw          | Sw2         |
|-----------|---------|----------|----|-------------|-------------|
| COAR08060 | M8      | M8       | 60 | 12,8 – 12,9 | 14,8 -14,9  |
| COAR10060 | M10     | M10      | 61 | 16,8 – 16,9 | 16,8 – 16,9 |

**DRAWING**

